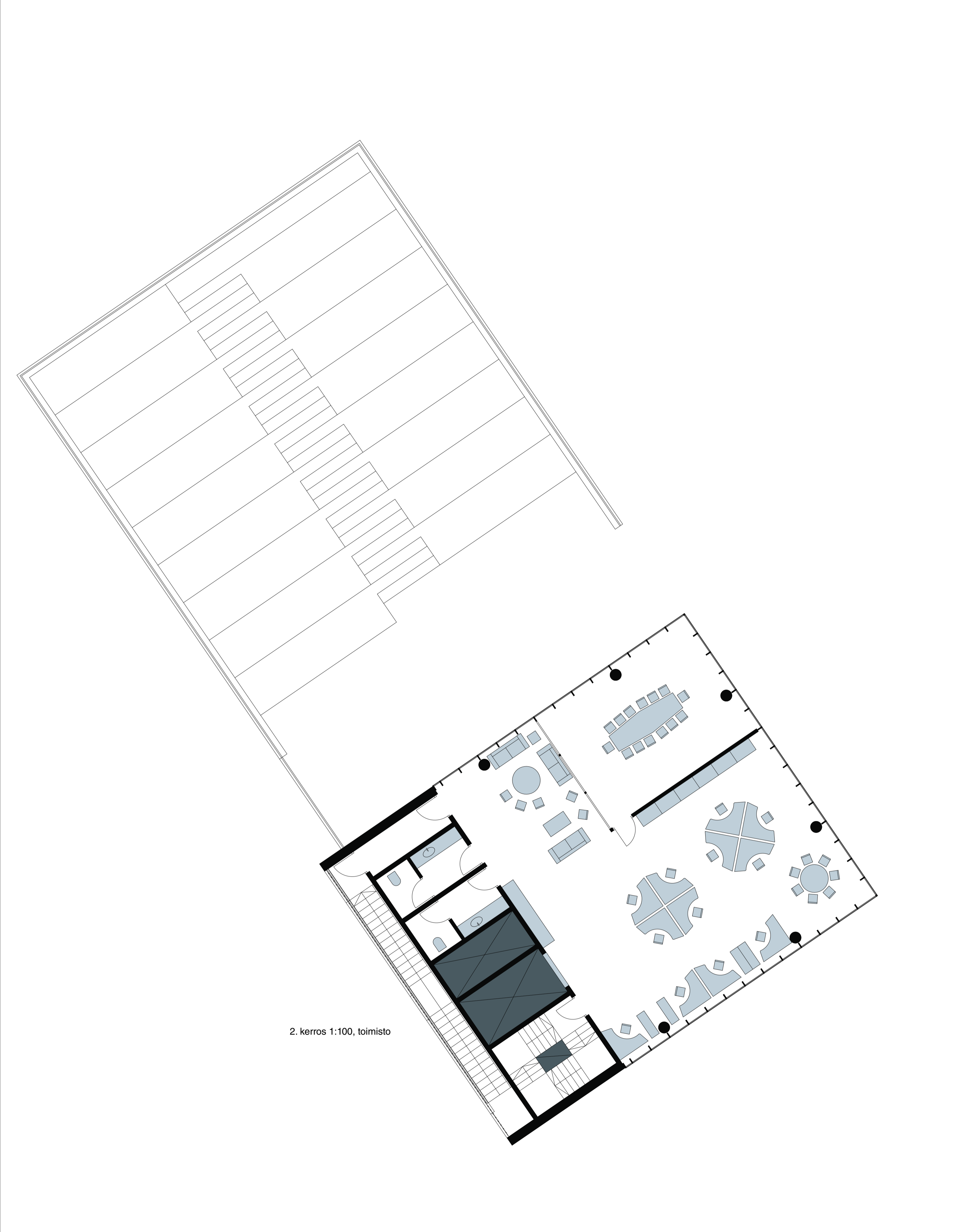
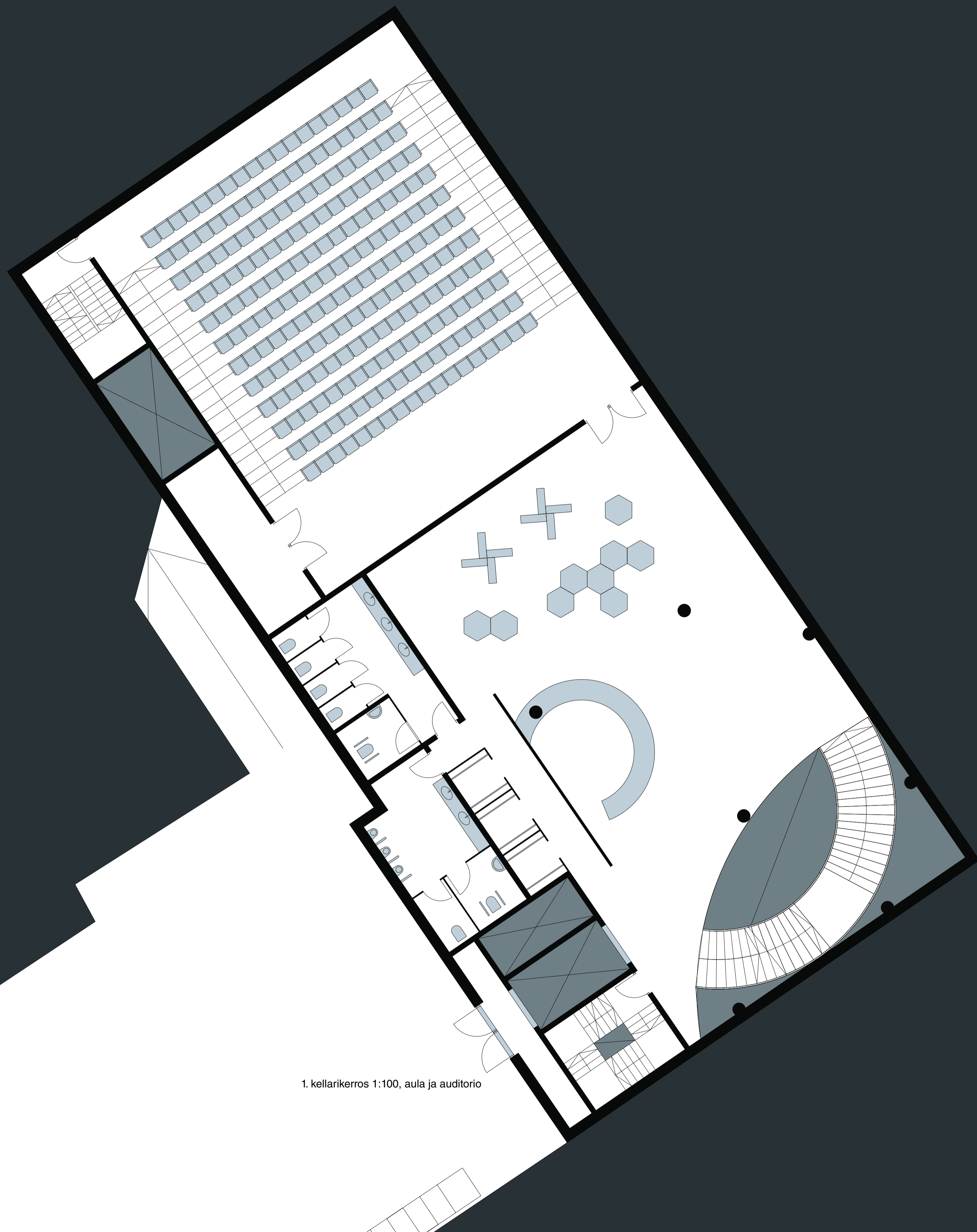


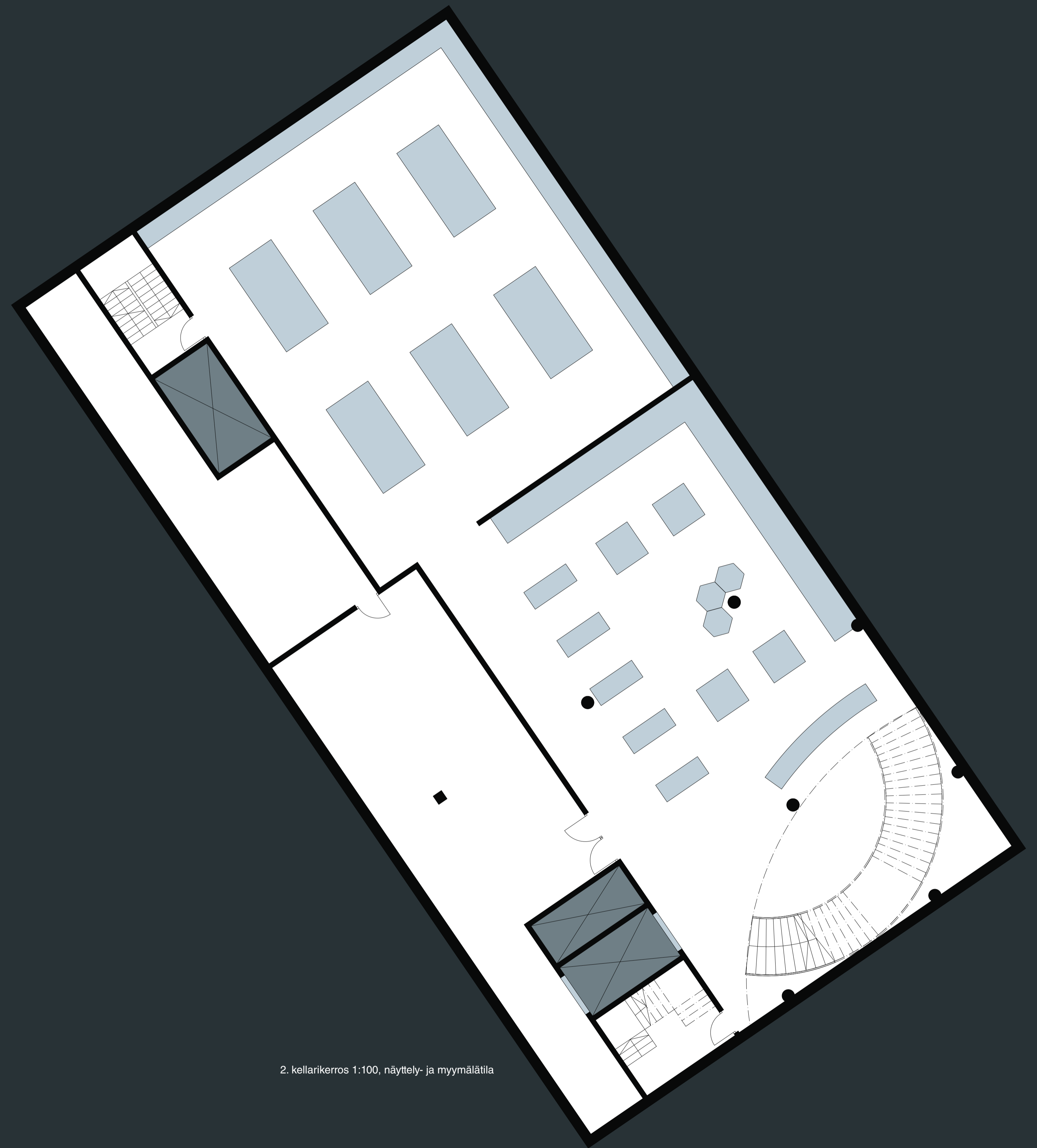
1. kerros 1:100, kahvila



2. kerros 1:100, toimisto



1. kellarikerros 1:100, aula ja auditorio



2. kellarikerros 1:100, näyttely- ja myymälät



leikkaus a-a 1:100

▼ vesikatto
+ 9000

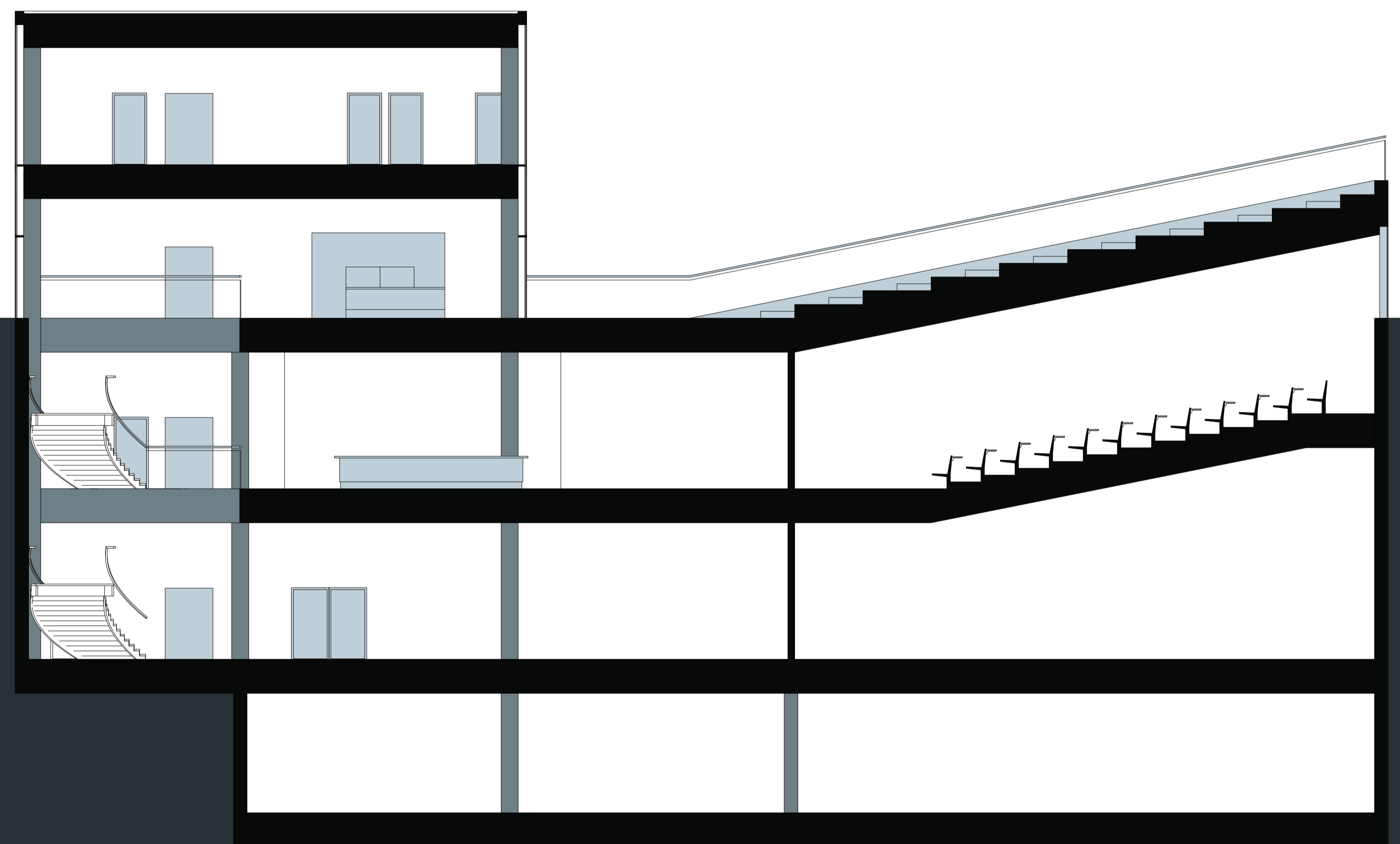
▼ toimisto
+ 4500

▼ kahvila
+ 0

▼ aula ja auditorio
- 5000

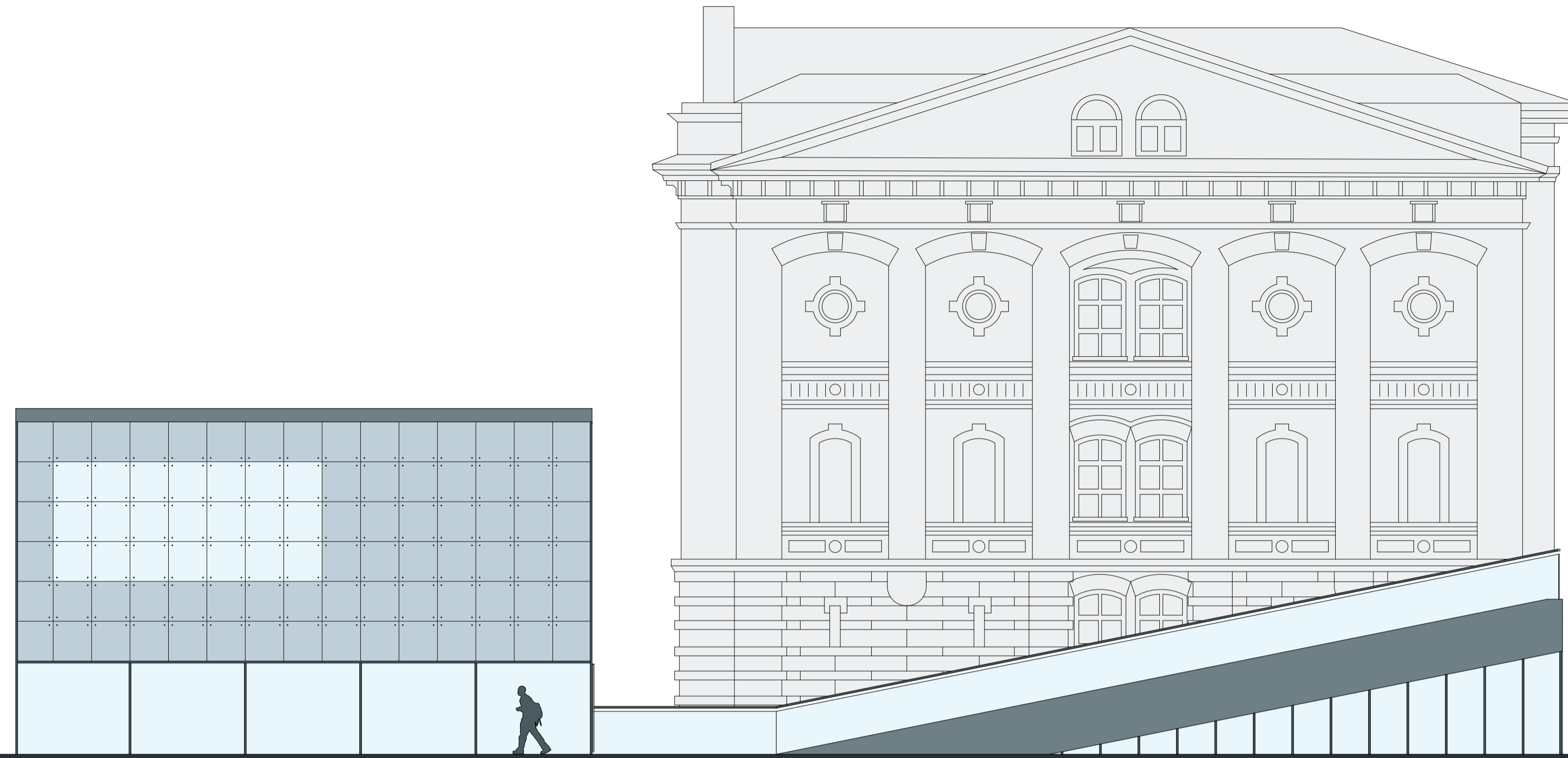
▼ näyttelytila ja myymälä
- 10000

▼ IV-konehuone
- 14500

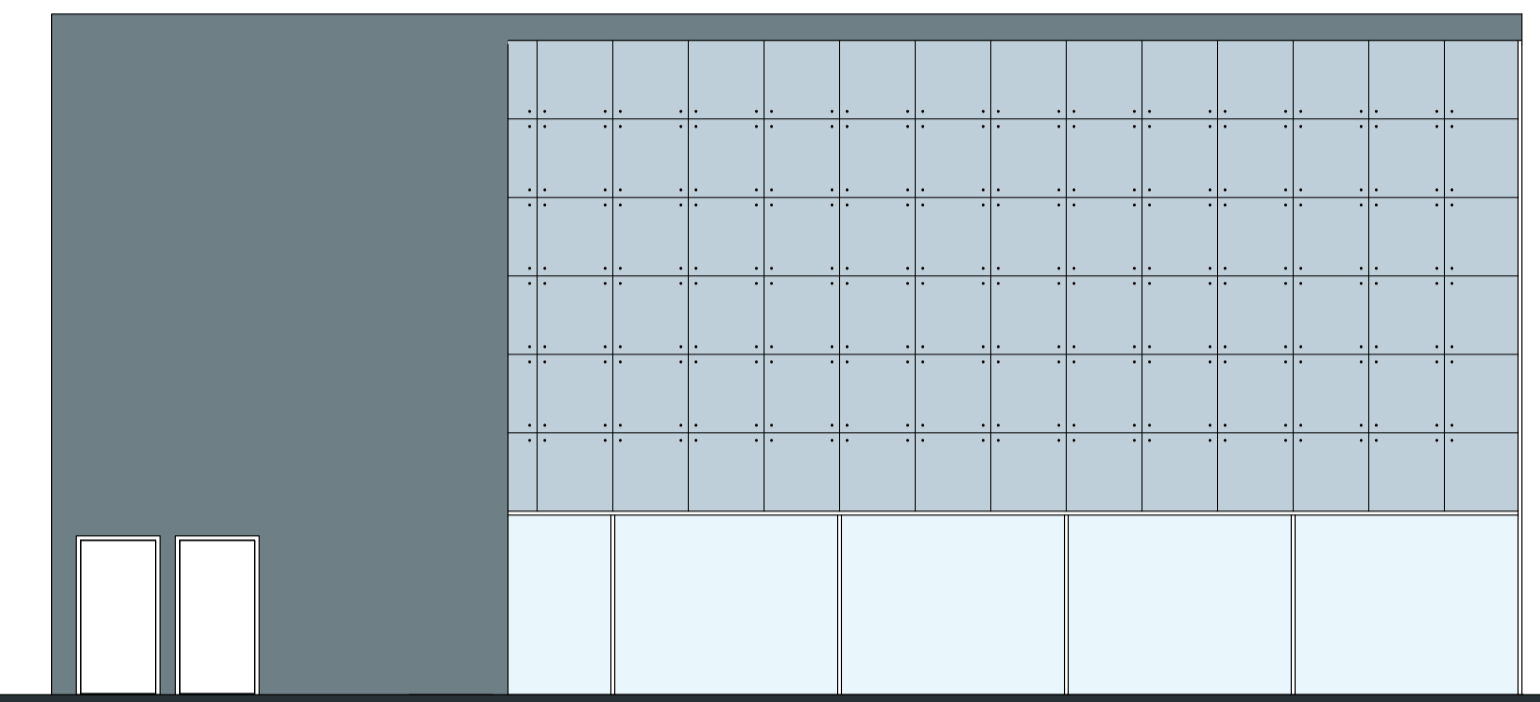


leikkaus b-b 1:100

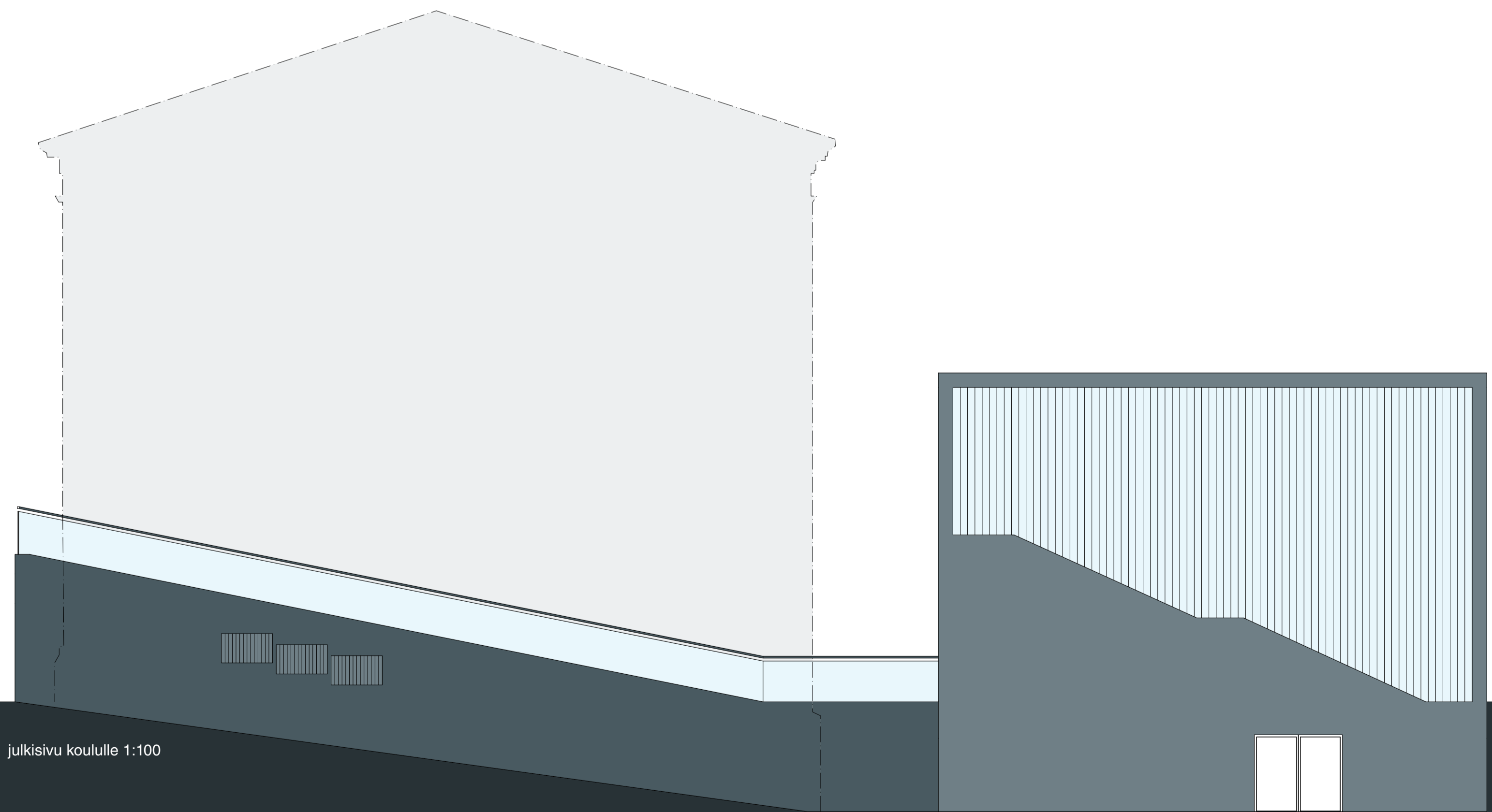




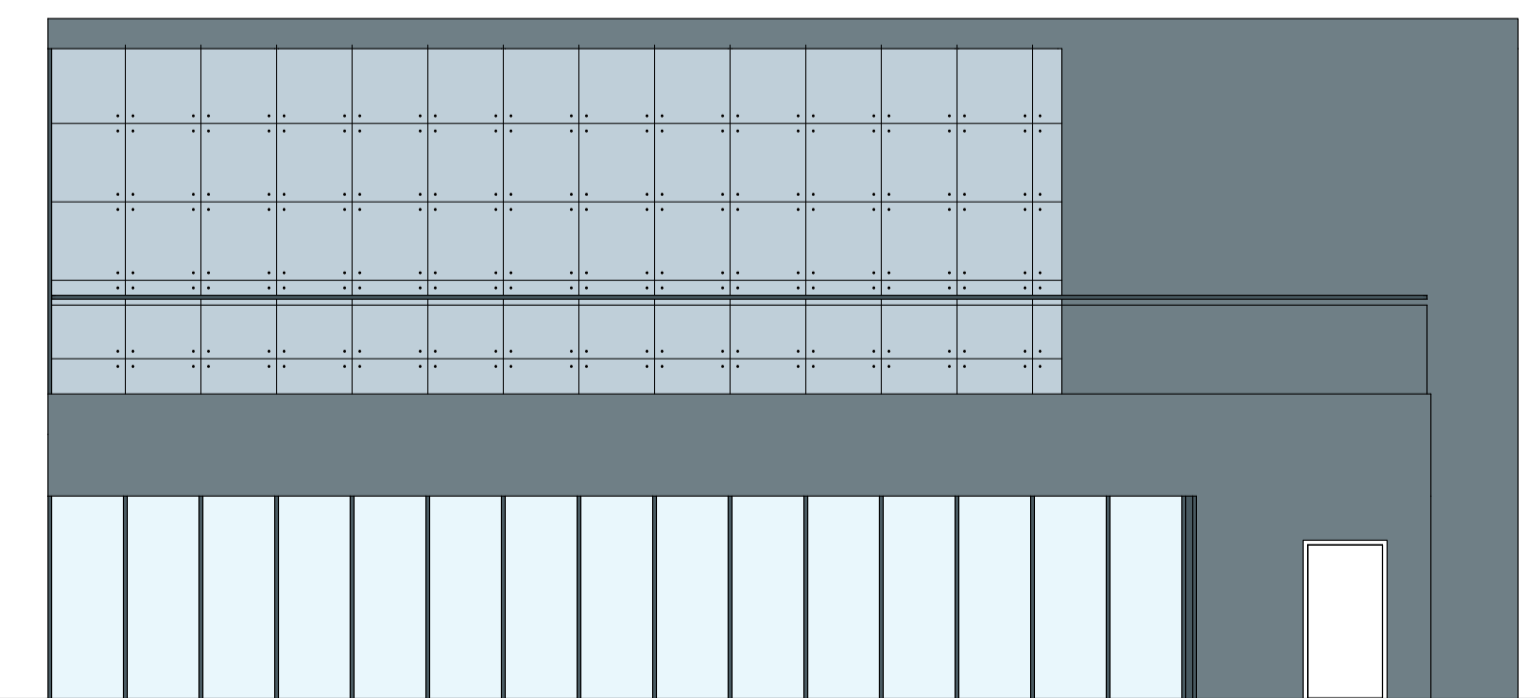
julkisivu Yrjönkadulle 1:100



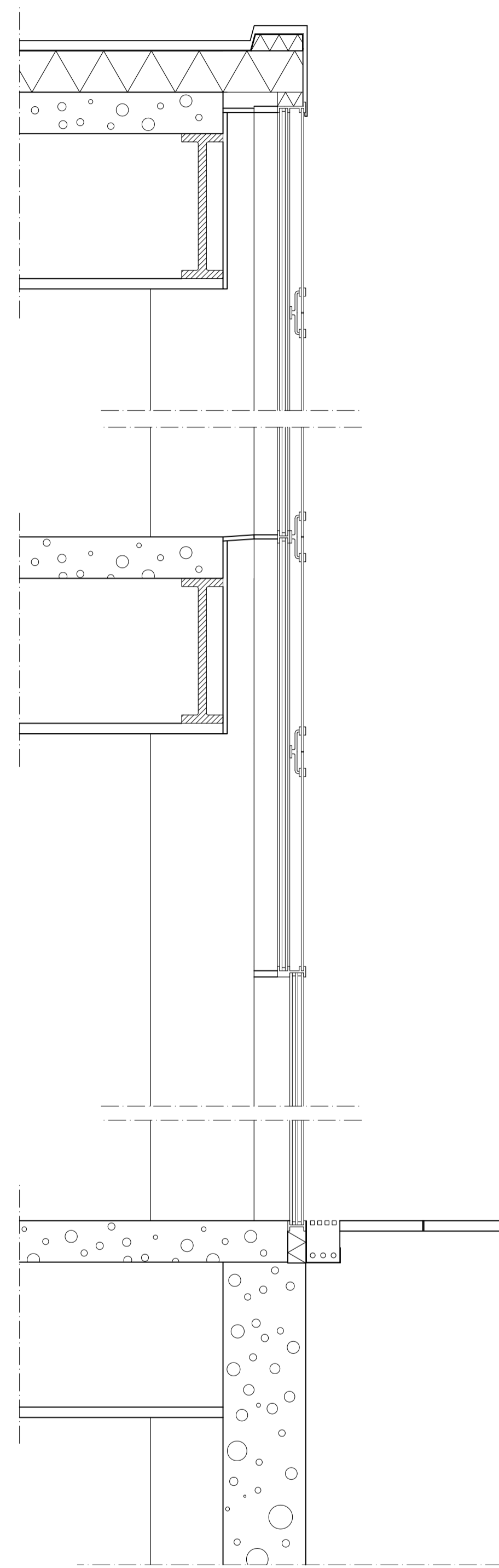
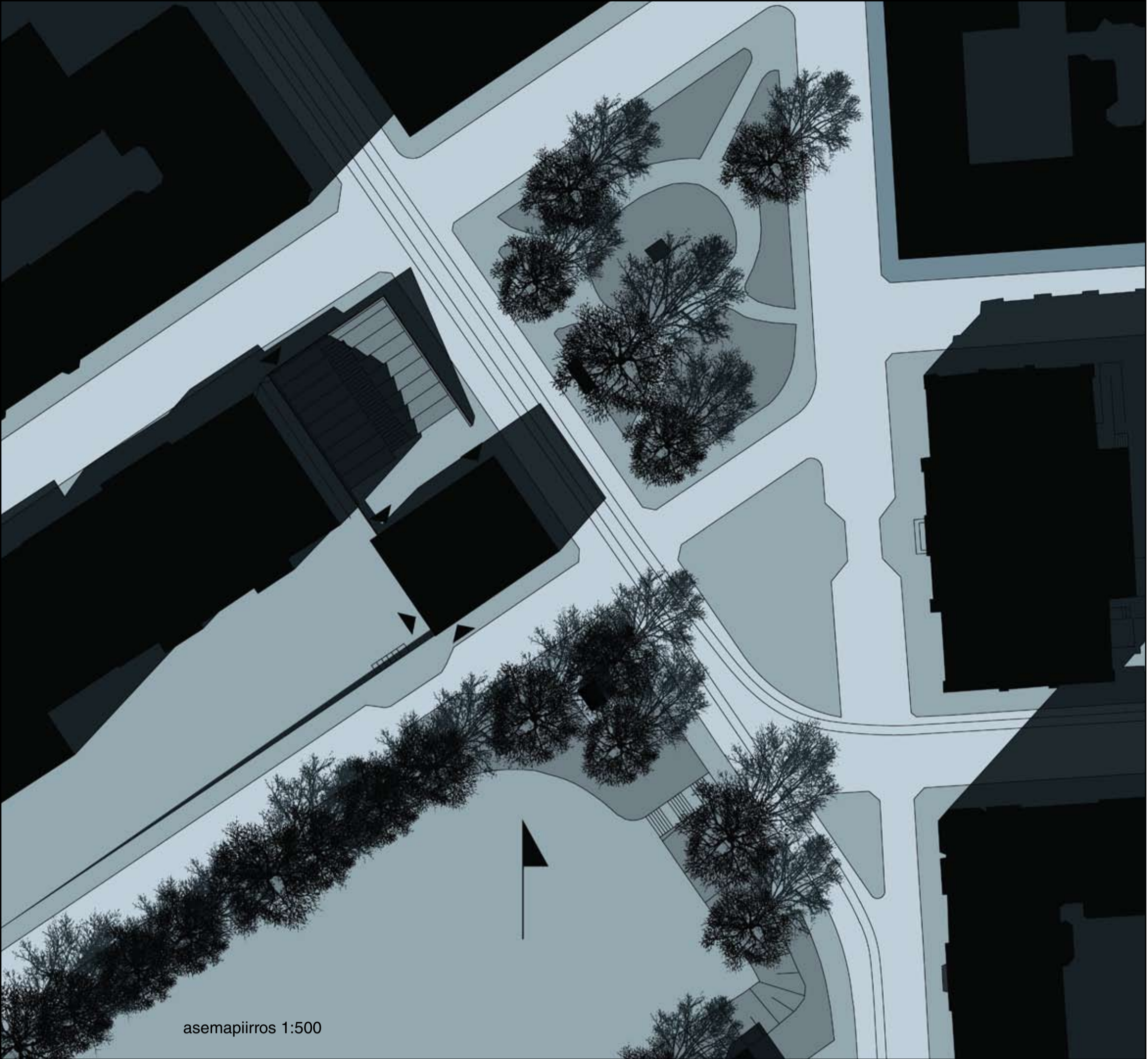
julkisivu Merimiehenkadulle 1:100



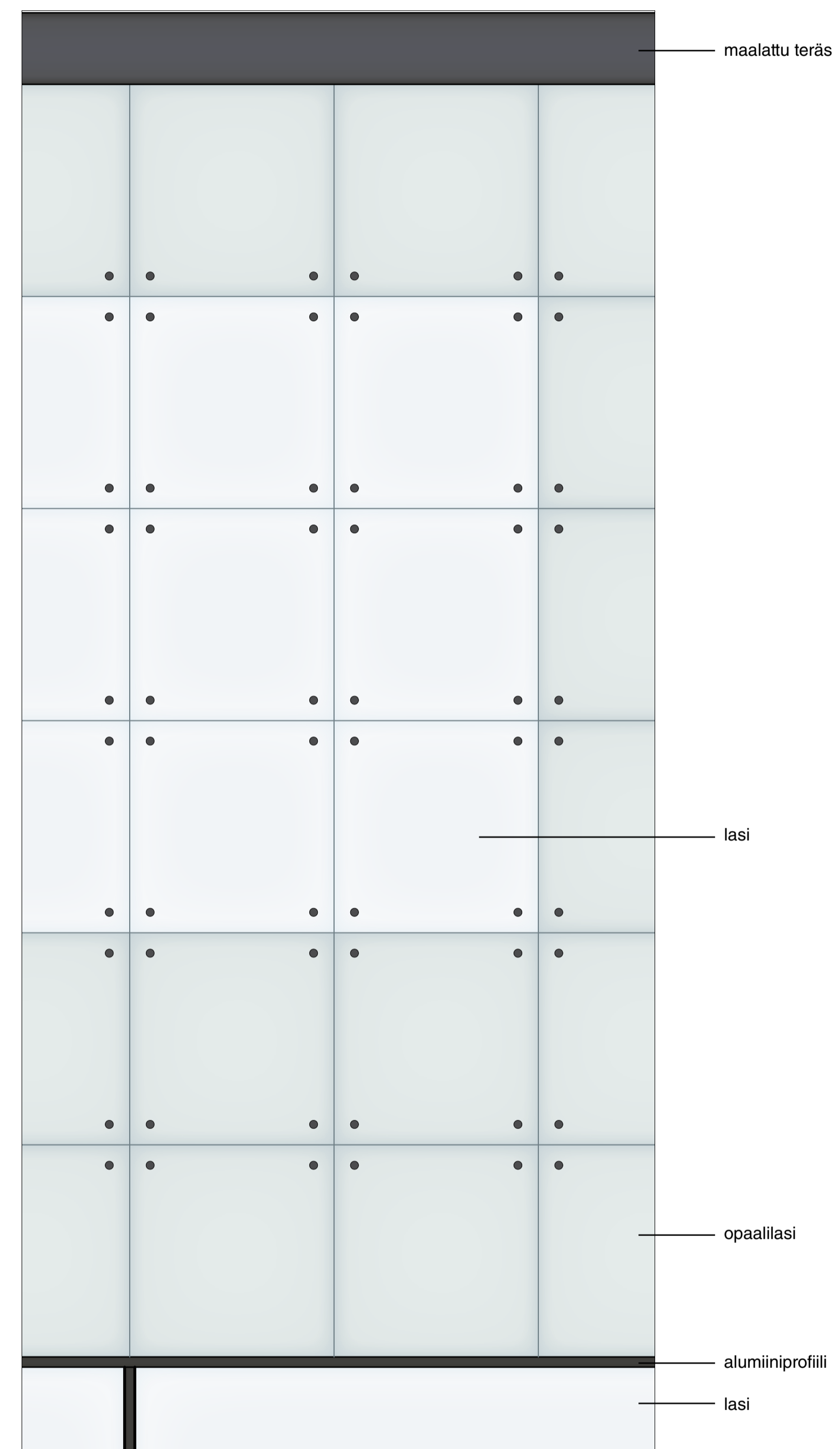
julkisivu koululle 1:100



julkisivu Ratakadulle 1:100



julkisivuleikkaus 1:20



julkisivuote 1:20